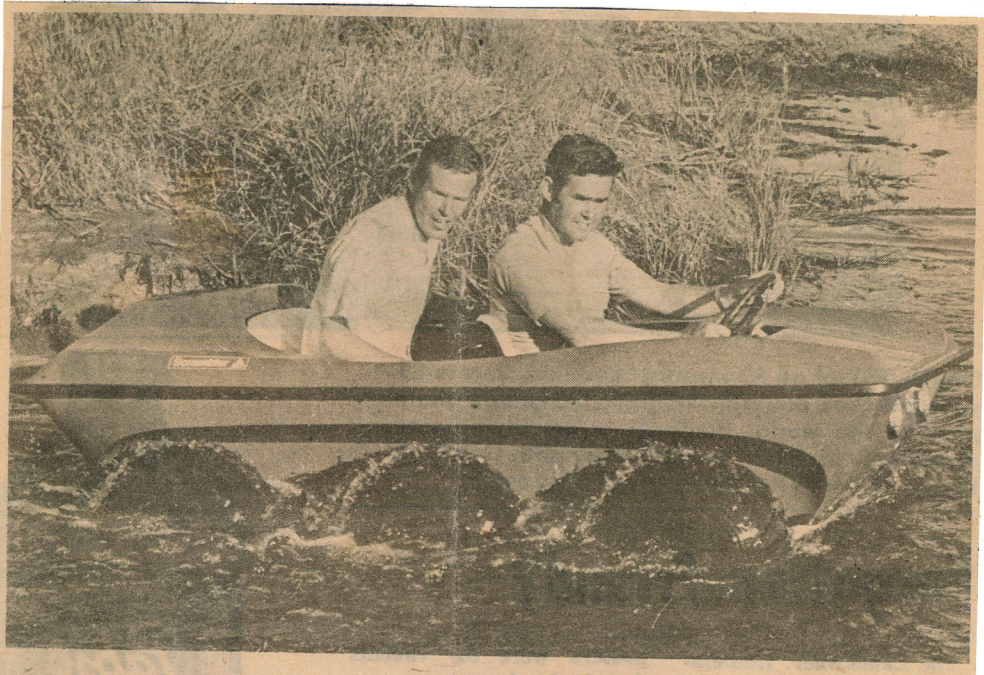


MINNEAPOLIS, MINN.
1-4-73
MPLS METRO AREA RICHFIELD SUN W 7.743
THURSDAY, OCTOBER 2, 1969



BOB AND AL UNSER, among the nation's outstanding race drivers, try out the new Scrambler during a brief lull in the racing action at Donnybrooke speedway in Brainerd recently. The Scrambler is an all-purpose, all-weather, all-terrain machine produced by Action Age of Cleveland. It is a six-wheeler that traverses swampland with ease, moves through water, climbs hills with little effort and can take a hunter or fisherman to otherwise inaccessible areas. It is powered by an eight-horsepower, four-cycle Briggs and Stratton engine and is easily hauled by a trailer.